

When Should a Student Be Referred?

- Students experiencing academic difficulty
- Students who are exceling and may need enrichment
- Students who have difficulty maintaining attention
- Students withdrawing from family, friends or school
- Students experiencing behaviors that interfere with learning
- Students with attendance or tardiness concerns
- Students experiencing substance abuse
- Students experiencing grief or emotional concerns
- Students with speech concerns

What is the referral process?

A school staff member, the student's parent(s) or the student can make a referral to the Student Assistance Team (SAT). Referral forms are located on the South Sioux City Community School districts website at: www.scccardinals.org . The referring party will complete the form and select submit. Upon completion of the referral, the SAT Coordinator will schedule a SAT meeting and notify all parties.

Student Learning - Student Success - Students Prepared For Life



For more information on the South Sioux City Community School District SAT process, please contact your school building or SAT Coordinator listed below:

Lewis & Clark: 494-1917

Harney: 494-1446

Dakota City: 987-3363

EN Swett: 494-3501

Covington: 494-4238

Cardina: 494-16621

SSC Middle School: 494-30611

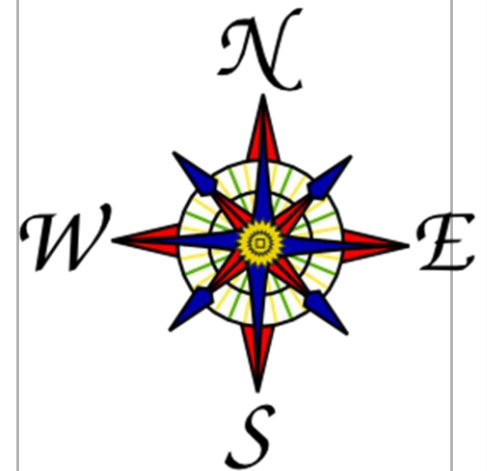
SSC High School: 494-24331

South Sioux Community School District

210 West 39th Street
South Sioux City, NE, 68776
402-494-2440

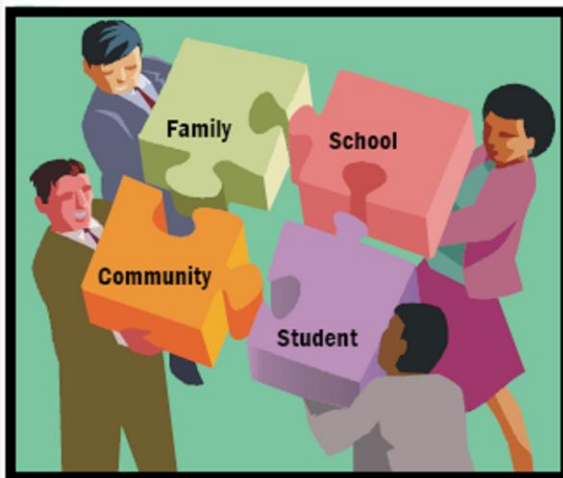
www.scccardinals.org

Student Assistance Team S.A.T.



South Sioux
Community School
District

"What is the Student Assistance Team?"



The Student Assistance Team (SAT) is a problem solving team comprised of general educators. The SAT assists school age students whose academic, health, behavioral, or social difficulties are interfering with success in the school setting. The team refers past and present information in order to develop an intervention plan designed to meet the individual needs of the student.

The SAT is comprised of a SAT Coordinator, a school administrator, and general educators. The student's parents and the student, when appropriate, are invited to be a part of the team process.

Referrals come from :

- *Teachers
- *Parents
- *Students
- *Administrators

***The SAT team will NOT become involved unless parent permission is obtained.

"How is a Student Referred to the SAT team?"

1. The student (when appropriate) and parents meet with a team of teachers. The meeting takes approximately 15 minutes, depending on individual case.

"What happens at the SAT meeting?"

2. The SAT Coordinator leads the Group through a process, which results in a written plan of action.

3. The team discusses the student's strengths, concerns, gathers pertinent history and information and discusses present interventions and outcomes. The team then brainstorms interventions and chooses actions to complete a plan of action for student success.

4. As the parent you will also be Asked to contribute information regarding your child's learning needs and help the development of an intervention plan.

5. The plan is implemented and is reviewed after several weeks to check progress.